



PART NUMBER

**PFR5-326**

DESCRIPTION

**BMW E36 REAR DIFF REAR MOUNTING BUSH**

### INSTALLATION GUIDE

#### **Contents (parts per pack):**

- 2 x Polyurethane bushes
- 2 x Aluminium sleeves
- 1 x Grease



*Please read the complete fitting instructions and check package components before fitment. These fitting instructions are to be used as a guide and in conjunction with workshop manual.*

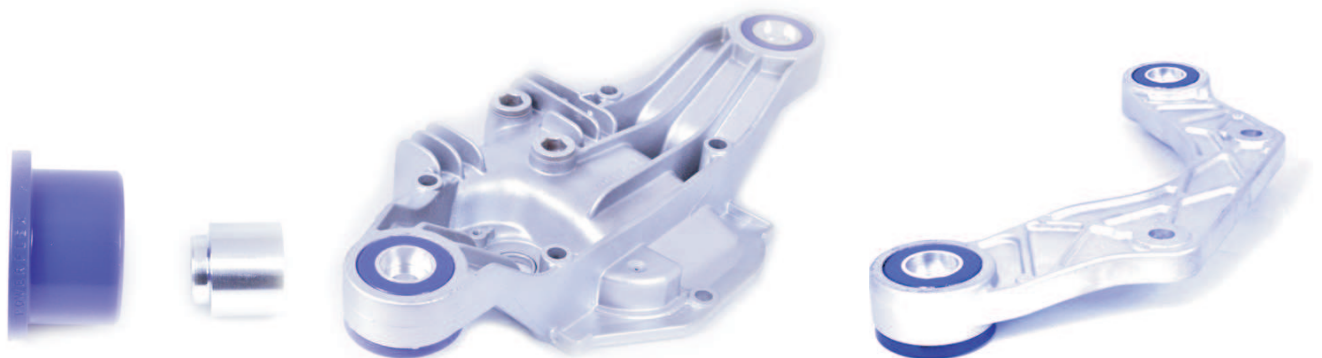
*It is recommended that:*

- all work to be carried out by a licensed technician;
- all safety precautions adhered to;
- wheel alignment to be checked and adjusted as required after any suspension work.

*All fasteners must be tensioned to manufacturer's torque settings.*

#### **Fitting Instructions:**

1. Remove both rear diff mounting bolts and lower the diff to allow access to the bushes. Remove the original bushes from the differential mounting. Clean any dirt or corrosion from inside the bore of the mounting.
2. Insert the polyurethane bush into the diff mounting with the largest diameter of the bush towards the front of the car, against the sub-frame. Take note of the different mounting options specified below. Apply some of the supplied grease to the bore and mounting faces of the bush.
3. Push the sleeve into the bush from the rear of the car, with the smallest diameter of the sleeve facing forwards.
4. Raise the diff into its original position and tighten original bolts and washers to manufactures recommended torque settings.



**Diff Bush Sleeve**